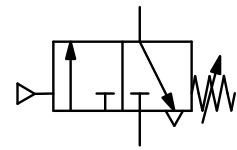
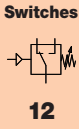


Description	Pilot-actuated pressure valve with precisely adjustable pilot setpoint. Perfect for applications which require intrinsic safety, pneumatic sequencing or pressure relief. Valves are normally opened or closed. The switch complies with FDA regulations and is suitable for water and food products.		
Media	5 µm filtered compressed air		
Pressure valve	3-port/2-way air-assisted servo valve with exhaust to atmosphere, NO or NC, made of nylon		
Supply pressure:	1.4...8 bar, untapped exhaust		
Air consumption:	max. 0.3 l/min at 2 bar supply pressure or max. 0.7 l/min at 7 bar		
Pneumatic connection:	quick connector for hose external diameter of 4 mm (5/32")		
Flow rate:	70 l/min at 7 bar, nominal size DN 0.2, $K_v = 0.05$		
Switching time:	64 ms at 6 bar supply pressure		
Accuracy	Pressure switch: at supply pressure variation of 0.7 bar: < 7 mbar pressure deviation Vacuum switch: at supply pressure variation of 0.3 bar: < 3 mbar pressure deviation		
Repeatability:	± 2% FS		
Temperature range	4 °C to 60 °C / 40 °F to 140 °F		
Material	Body: polysulphone	Mounting position: any	Spring: stainless steel
	Diaphragm: polyurethane	Media non-contact parts: nylon, carbon fibre nylon, acetal	



70... 350 mbar / 7 bar
-30... -170 / -850 mbar



Description	Supply pressure of switching valve	Hysteresis typical	Hysteresis max.	Over-pressure max. bar	Measurement range bar	Order number
-------------	------------------------------------	--------------------	-----------------	------------------------	-----------------------	--------------

Switch with pneumatic output, NO	1/8" NPT male, supply pressure 1.4...8 bar		PP / VP700			
<p>pressure switch</p>	1.4...8 bar	15	30	2	0.07... 0.35	PP700- 5PT
	NO	20	40	4	0.07... 1.0	PP700- 15PT
		20	70	4	0.07... 2.1	PP700- 30PT
		35	140	8	0.20... 4.2	PP700- 60PT
		50	240	8	0.35... 7.0	PP700-100PT
<p>vacuum switch</p>	1.4...8 bar	15	35	-1	-0.03... -0.17	VP700- 5PT
	NO	20	40	-1	-0.03... -0.34	VP700- 10PT
		35	70	-1	-0.07... -0.85	VP700- 30PT



PP700-100PT

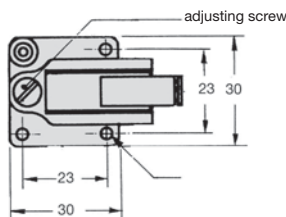
Switch with pneumatic output, NC	1/8" NPT male, supply pressure 1.4...8 bar		PP / VP701			
<p>pressure switch</p>	1.4...8 bar	15	30	2	0.07... 0.35	PP701- 5PT
	NC	20	40	4	0.07... 1.0	PP701- 15PT
		20	70	4	0.07... 2.1	PP701- 30PT
		35	140	8	0.20... 4.2	PP701- 60PT
		50	240	8	0.35... 7.0	PP701-100PT
<p>vacuum switch</p>	1.4...8 bar	15	35	-1	-0.03... -0.17	VP701- 5PT
	NC	20	40	-1	-0.03... -0.34	VP701- 10PT
		35	70	-1	-0.07... -0.85	VP701- 30PT



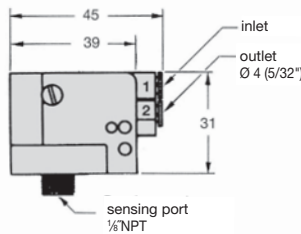
PP700-15PM

Special options, add or change the appropriate letter

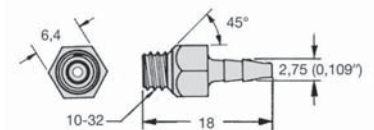
flush mounting	barbed fitting made of nylon,	$\varnothing 1/16", \varnothing 2 \text{ mm}$.P70.-... FMB80
panel mounting	barbed fitting made of nylon,	$\varnothing 1/16", \varnothing 2 \text{ mm}$.P70.-... PMB80
manifold mounting			.P70.-... MM
barbed fitting	for FM and PM,	nylon, $\varnothing 1/16", \varnothing 2 \text{ mm}$.P70.-... B80
		nylon, $\varnothing 1/8", \varnothing 4 \text{ mm}$.P70.-... B85
		polysulphone, $\varnothing 1/16", \varnothing 2 \text{ mm}$.P70.-... P80
		polysulphone, $\varnothing 1/8", \varnothing 4 \text{ mm}$.P70.-... P85
free of grease and oil	especially cleaned, suitable for oxygen		.P70.-... L



PP / VP70



B80 / P80



B85 / P85

*1 only output signal in the absence of input signal (positive pressure, vacuum)
*2 no output signal in the absence of input signal (positive pressure, vacuum)